

A46 Newark Bypass

TR010065/APP/6.2

6.2 Environmental Statement

Figure 8.4 Planting for Loss of Local Wildlife Site Habitats

APFP Regulation 5(2)(a)

Planning Act 2008

Infrastructure Planning (Applications: Prescribed Forms and
Procedure) Regulations 2009

Volume 6

April 2024

Infrastructure Planning

Planning Act 2008

**The Infrastructure Planning
(Applications: Prescribed Forms
and Procedure) Regulations 2009**

A46 Newark Bypass

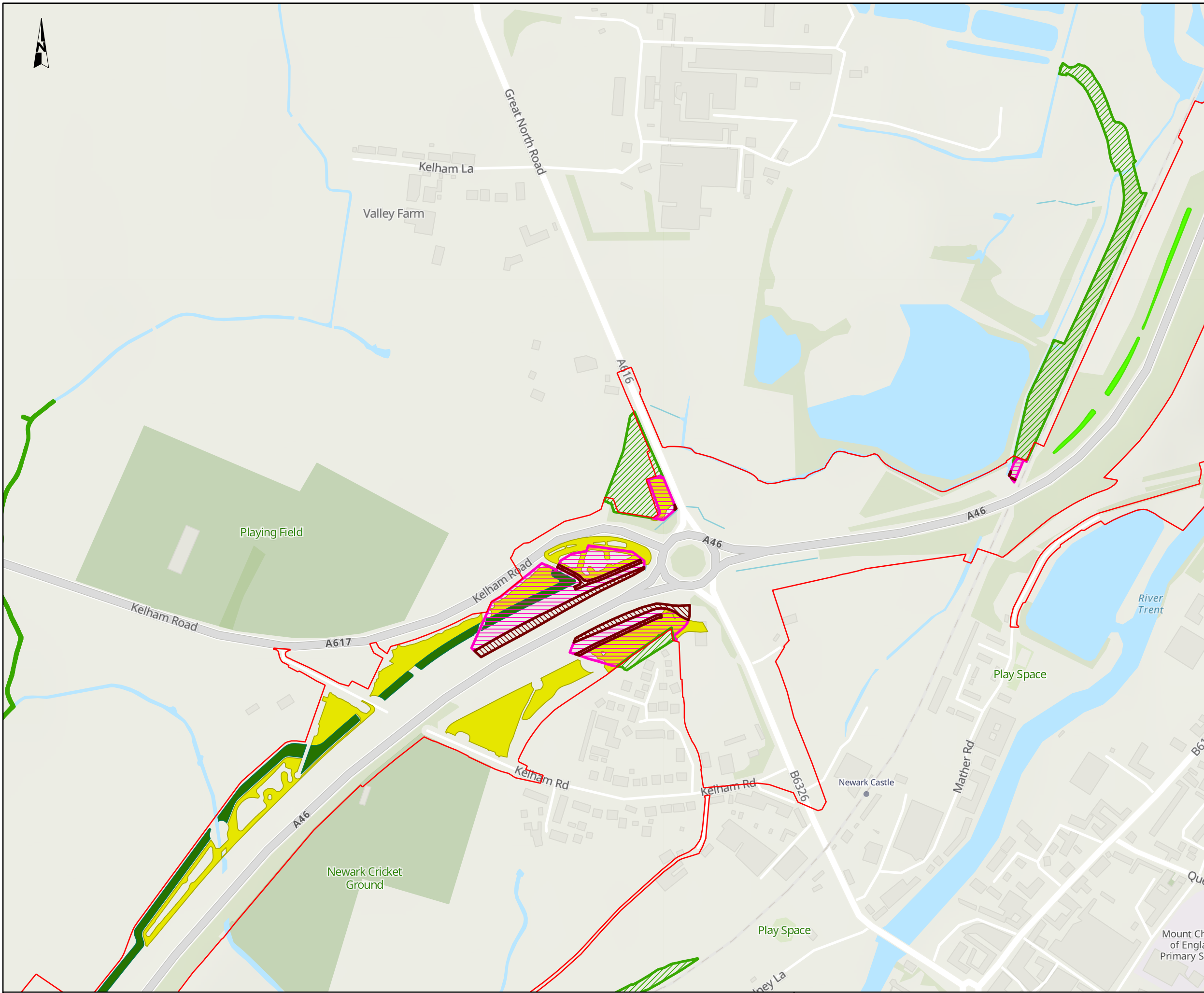
Development Consent Order 202[x]

ENVIRONMENTAL STATEMENT

Figure 8.4 Planting for Loss of Local Wildlife Site Habitats

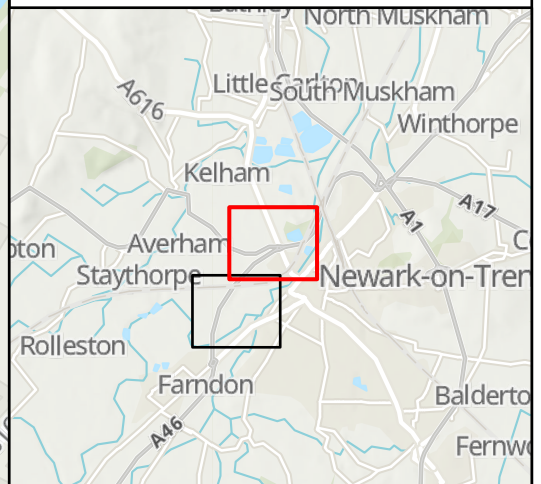
Regulation Number:	Regulation 5(2)(a)
Planning Inspectorate Scheme Reference	TR010065
Application Document Reference	TR010065/APP/6.2
Author:	A46 Newark Bypass Project Team, National Highways

Version	Date	Status of Version
Rev 1	April 2024	DCO Application



NOTES
Service Layer Credits
 Contains OS data © Crown Copyright and database right 2023
 Contains data from OS Zoomstack

- KEY TO SYMBOLS**
- Order Limits
 - Impact on Local Wildlife Sites (LWS)**
 - Permanent Loss
 - Retention
 - Temporary Loss
 - Compensation planting for loss of LWS habitat**
 - Dairy Farm Railway Strip, Newark
 - Great North Road Grasslands
 - Newark (Beet Factory) Dismantled Railway



C01	08/12/23	DCO APPLICATION	DT	BC	HF
REV.	DATE	AMENDMENT DETAILS	ORIG	CHK'D	APP'D

CLIENT
 national highways

PURPOSE OF ISSUE
 DCO APPLICATION

DEVELOPMENT CONSENT ORDER NUMBER
 TR010065

PROJECT TITLE
 A46 NEWARK BYPASS

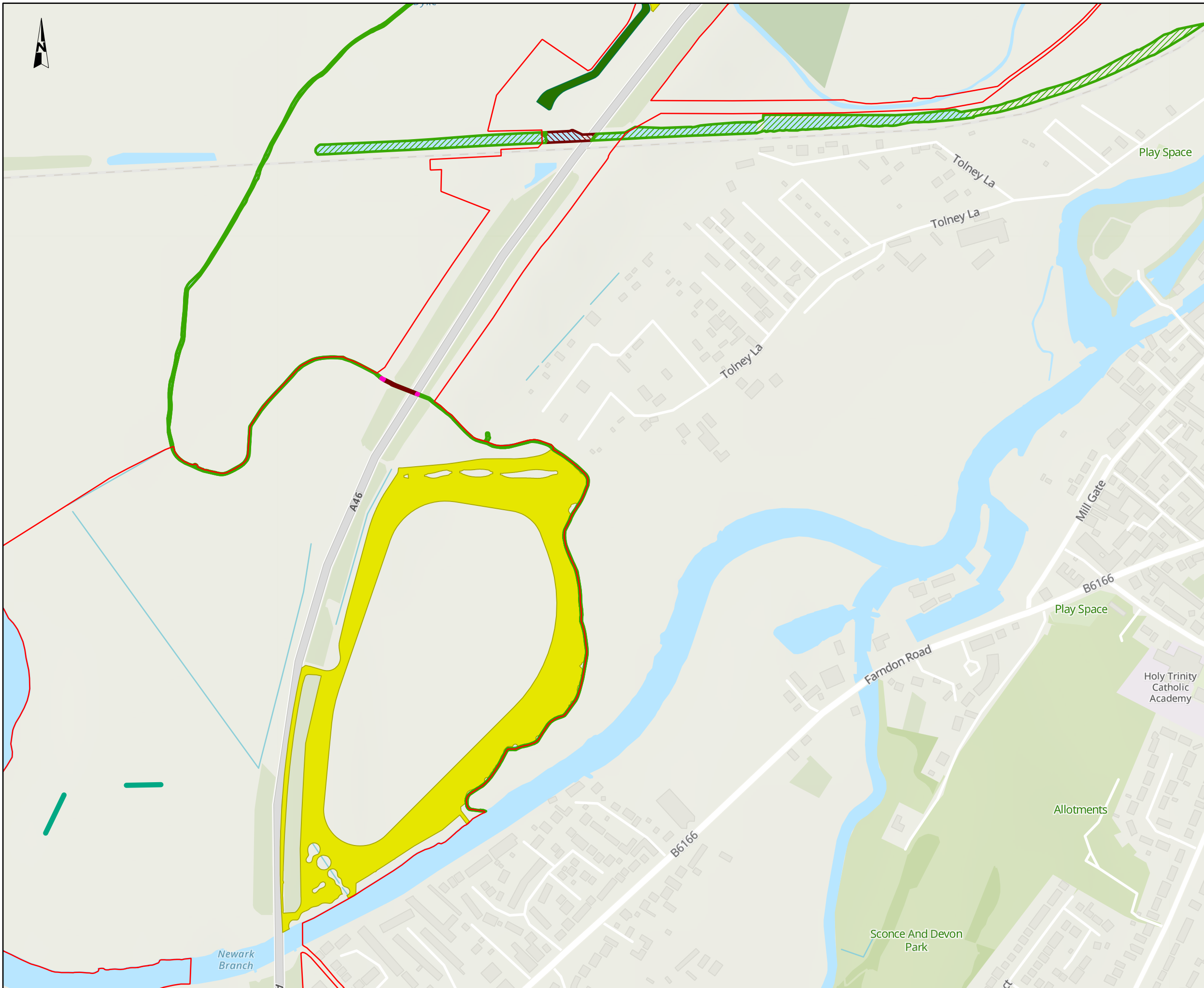
DRAWING TITLE
Figure 8.4
 Compensation Planting for Loss of Local Wildlife Site Habitats

ORIGINAL SIZE A3 SCALE 1:5,000

DRAWING NUMBER HE551478	ORIGINATOR SKAG	VOLUME EBD	PROJECT REF NO. HE551478
CONWI_CONW	DR	LE	00171
LOCATION	TYPE	ROLE	NUMBER
			REVISION C01

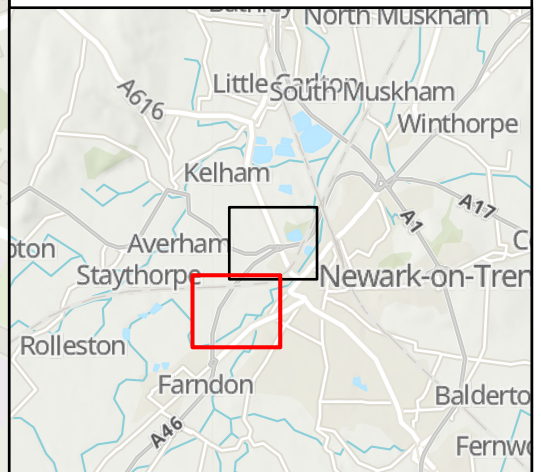
© Skanska
 This document is issued for the party which commissioned it and for specific purposes connected with the captioned project only. It should not be relied upon by any other party or used for any other purpose.
 We accept no responsibility for the consequences of this document being relied upon by any other party, or being used for any other purpose, or containing any error or omission which is due to an error or omission in data supplied to us by other parties.





NOTES
Service Layer Credits
 Contains OS data © Crown Copyright and database right 2023
 Contains data from OS Zoomstack

- KEY TO SYMBOLS**
- Order Limits
 - Impact on Local Wildlife Sites (LWS)**
 - Permanent Loss
 - Retention
 - Temporary Loss
 - Compensation planting for loss of LWS habitat**
 - Dairy Farm Railway Strip, Newark
 - Great North Road Grasslands
 - Old Trent Dyke



C01	08/12/23	DCO APPLICATION	DT	BC	HF
REV.	DATE	AMENDMENT DETAILS	ORIG	CHK'D	APP'D

CLIENT

PURPOSE OF ISSUE
 DCO APPLICATION

DEVELOPMENT CONSENT ORDER NUMBER
 TR010065

PROJECT TITLE
 A46 NEWARK BYPASS

DRAWING TITLE
Figure 8.4
 Compensation Planting for Loss of Local Wildlife Site Habitats

ORIGINAL SIZE A3 SCALE 1:5,000 PROJECT REF NO. HE551478

DRAWING NUMBER HE551478	ORIGINATOR SKAG	VOLUME EBD	PROJECT REF NO. HE551478
LOCATION CONWI_CONW	TYPE DR	ROLE LE	REVISION C01
	NUMBER 00172		

© Skanska
 This document is issued for the party which commissioned it and for specific purposes connected with the captioned project only. It should not be relied upon by any other party or used for any other purpose.
 We accept no responsibility for the consequences of this document being relied upon by any other party, or being used for any other purpose, or containing any error or omission which is due to an error or omission in data supplied to us by other parties.

